

Inline High Resolution and High Speed Automated Optical Inspection System

BF-Planet-X

High Resolution Imaging System

With a superior resolution of 10µm and scanning line color CCD camera, both AOI system provide accurate and stable inspection results. Solder fillets on components as small as the high density mounted 01005(0402) chip, as well as IC's with 0.4mm pitch lead are easily inspected and analyzed.

High Accuracy

The BF-Planet-X inspection system utilizes a *Telecentric Lens System* (1) and an *Automatic Digital Brightness Control System* (2) for improved repeatability and increased accuracy of the inspection result. For Character Recognition, Polarity, and Solder Fillet, both AOI systems employ *Brilliant MLT Lighting* (3) which helps capture a clearer PCB image.

Industry-Leading High Throughput

To maximize throughput, the BF-Planet-X uses Saki's unique *Alternating Lighting Digital Scanning System* (4) to scan and capture images of the entire PCB in a single pass. With the scanning sequence optimized to dramatically reduce inspection tact time, Saki AOI's offer industry-leading throughput.

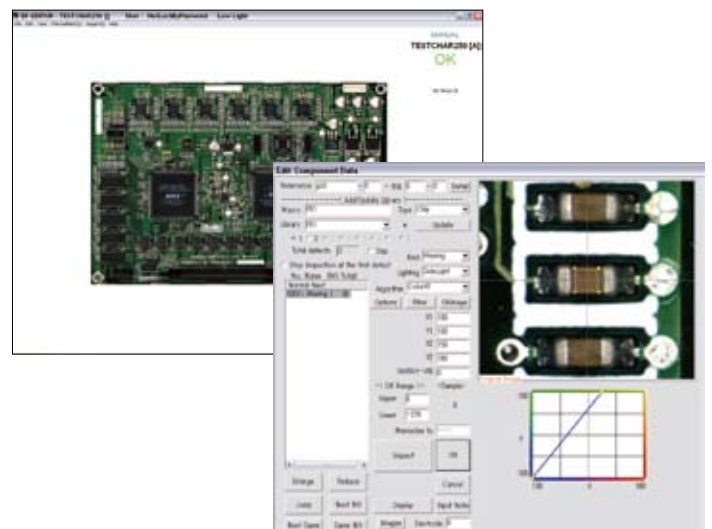
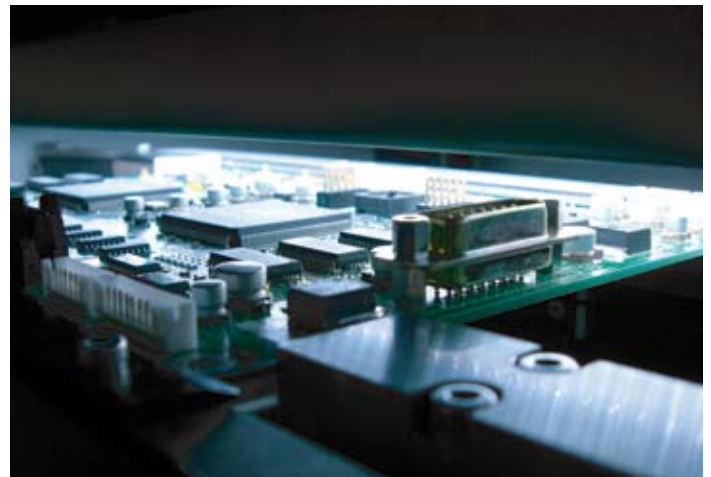
Flexibility

The PCB clearance, 20mm at the top and 30mm at the bottom (BF-Frontier is 40mm at the top and 40mm at the bottom), is designed to allow inspection for PCBs with tall components. In addition, the BF-Planet-X and BF-Frontier can be placed in any stage of the PCB production process from post print, post pick & place, and post-flow / reflow.

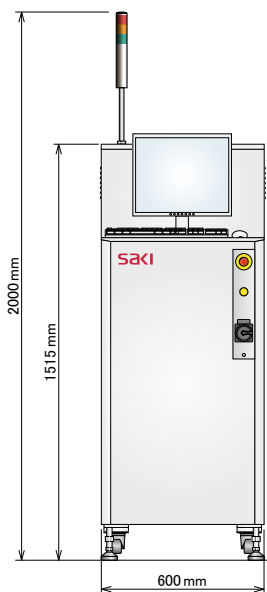
Traceability

Barcode (2D optional) capability (QR, data matrix). The barcode option allows for easy PCB inspection data management.

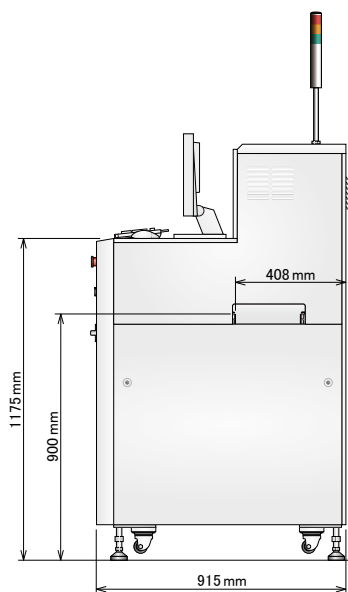
1. The Telecentric lens system was designed to compensate for image distortion for more accurate detection.
2. Pixel brightness is automatically adjusted to produce a clearer image.
3. The system employs 3 types of high intensity LEDs: Top Light, Full-Color Side Light, and Low Light.
4. The alternating lighting system, in conjunction with the system's line scanning capability, enables the system to capture multiple images of the entire PCB in a single scan.



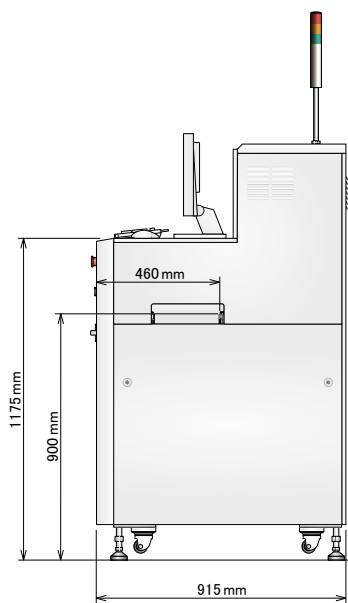
Dimensions



Front View



Side View(Standard rail:Front type)



Side View(Standard rail:Rear type)

System Specifications

Model	BF-Planet-X
Board Size	50×60 - 250×330mm, 2×2.4 - 10×13in
Board Thickness	0.6 - 2.5mm, 24 - 100mils
Board Warp	+/-2mm, 79mils
PCB Clearance	Top: 20mm, 0.8in Bottom: 30mm, 1.2in
Rotated Component Support	Available for 0 - 359°rotation (unit of 1°)
Inspection Categories	Presence/Absence, Misalignment, Tomb stone, Reverse, Polarity, Bridge, Foreign material, Absence of solder, Insufficient solder, Lifted lead, and Fillet defect. Each defect name can be changed freely by system function.
Scanning Time	Approx. 23sec. (250×330mm)
Calculating Time	*Approx. 3 sec./10,000 inspection windows
PCB Loading / Unloading Time	Approx. 3 sec.
Resolution	10µm
Camera (Image Processing)	Line color CCD camera
Lighting	LED lighting system
Transfer Conveyor Method	Round belt transfer
Transfer Conveyor Height	900+/-20mm, 36+/-0.8in
Transfer Conveyor Width Adjustment	Manual
Operating System	Windows XP English Version
System Option	BF-RP1 / BF-Editor / BF-Monitor / BF-View
Option	2D Barcode Recognition, Journal Printer

*Calculating time depends on inspection algorithm.

System Requirements

Electric Power Requirement	Single Phase ~100 - 120V / 200 - 240V +/-10%, 50/60Hz, 500VA
Air Requirement	0.5MPa, 5L/min (ANR), 73PSI, 0.18CFM
Usage Environment	15°C(59F) - 30°C(86F) / 15 - 80% RH (Non-condensing)
Dimensions W x D x H	600 × 915 × 1515mm 24 × 36 × 60in
Weight	Approx. 300kg, 660lbs

saki Saki Corporation

URL:<http://www.sakicorp.com> E-mail:sakicorp@sakicorp.com

Headquarters

Ogawa Building, 4-14-7, Nakanobu,
Shinagawa-ku, Tokyo, Japan, 142-0053
TEL: +81-3-5788-6280 FAX: +81-3-5788-6295

Saki (Shanghai) CO.,LTD

Room 809, Kerry Everbright City, No. 218 West Tian Mu Road,
Zhabei District, Shanghai 200070, P.R.C.
TEL: +86-21-6282-2266 FAX: +86-21-5230-5002

Saki America, Inc.

200 Prosperity Drive Knoxville, TN 37923
TEL: +1-865-824-1332

Global Network

USA office (TN)

TEL: +1-865-824-1332

Europe office (Augsburg)

TEL: +49-821-90-89-99-0

FAX: +49-821-90-89-99-99

China office (Shanghai)

TEL: +86-21-6282-2266

FAX: +86-21-5230-5002

Korea office

TEL: +82-31-222-6144

FAX: +82-31-222-6744

Taiwan office

TEL: +886-3-312-6868

FAX: +886-3-312-6767

Asia Pacific office (Singapore)

TEL: +65-6496-7711

FAX: +65-6496-7722