

## PCB Optical Inspection Equipment

# FE-LINE DT

Excellent cost-performance  
for

## PCB PROTOTYPING AND MID-VOLUME PRODUCTION

**While FE-LINE DT is a compact table-top model, it is the only final inspection equipment capable of detecting minute defects. This model is best fit to the inspection requirements of PCB prototyping and mid size production environments!**

<b>FEATURE</b>	<b>While keeping compact style, pixel resolution in FE-LINE DT is as high as 15<math>\mu</math>m!</b>
<b>1</b>	

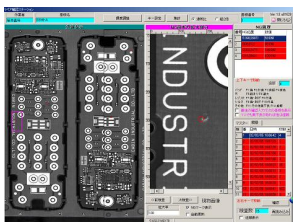
- 1199(w) × 480(L) × 552(H) mm Table-Top Compact Size
- Pixel Resolution is 15  $\mu$  m and defects as small as 45  $\mu$  m are detectable
- Manual loading Inspection tool suitable for small and mid volume production



<b>FEATURE</b>	<b>Intelligent Image Process Algorithm that virtually eliminates false defect reports!</b>
<b>2</b>	

Pads, solder-masks, and legends etc. are automatically recognized. Since acquisition condition of each feature is registered independently, high precision inspection is realized in virtually free of false defect reports. Moreover, auto-compensation feature for the brightness differences in varying lots allows minimizing false reports.

<b>FEATURE</b>	<b>Optional Defect Analysis PC allows uninterrupted operation of Inspection Machine!</b>
<b>3</b>	



Defect Confirmation Screen



Defect Analysis PC

Connecting a Defect Analysis PC in the network enables non-interrupted operation of the inspection equipment while defects are being analyzed.

### Specifications

Inspection Size	50 × 50mm ~ 250 × 200
Board Thickness	0.5 ~ 2.0mm
Camera Specs	7400 pixel Line sensor camera 1~2 stage
Image Resolutions	15 ~ 30 $\mu$ m (selectable)
Inspection Items	Scratch, , dirt, Inclusion, mask delam, etc.

### **HINSTEK** ハイinsteck株式会社

Hinstec Co., Ltd.  
81 Koizumi, Ueda, Nagano, Japan 386  
<http://www.hinstec.co.jp>

For more information, please contact to  
HDI Solutions, Inc.  
2930 Corvin Dr., Santa Clara, CA 95051  
TEL : (408)733-6700 FAX : (408)733-6600  
<http://www.hdi-s.com>