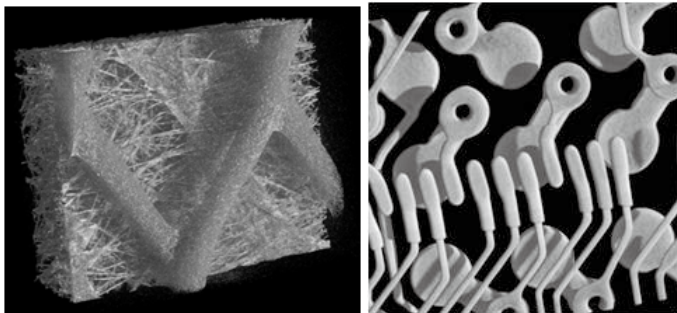


Nanofocus, High Speed 3D X-Ray Computed Tomography CT-350

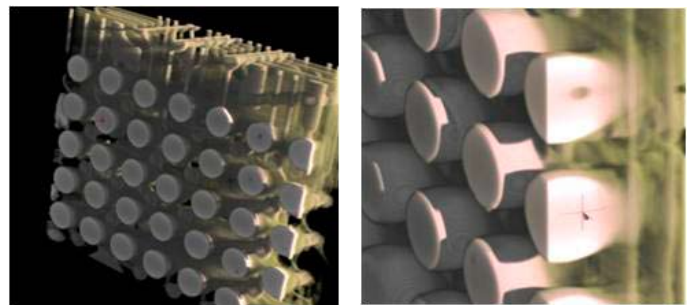
200 nanofocus 3D Computed Tomograph

The CT-350 offers sub-micro resolution, ('nanofocus': < 300 nanometer voxel resolution) 3D computed tomography with 160 kV / 200 nanometer focal spot size, suitable for the applications in materials science, micromechanics, electronics and biology.



High speed reconstruction algorithm

The Fraunhofer EZRT 3D reconstruction algorithm offers faster and accurate 3D reconstruction. By using a separate PC for image acquisition and CT reconstruction we are able to process the data during the imaging process. The CT350 is capable to show e.g. even small details of the real three-dimensional shape of smallest soldered electronic devices.



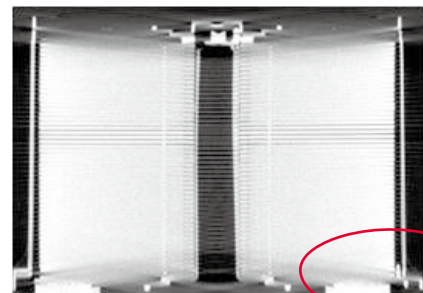
High Accuracy and stable system

The system design incorporates a granite base to provide vibration damping resulting in very high accuracy. The shock absorption design isolates the sampling process from the production environment for best image quality. A built-in active cooling system eliminates any distortion from any heat effect during the acquisition process. The motorized sample holder rack facilitates setting up the samples and the built-in Webcam allows for viewing the position of the sample. The horizontal orientation of X-Rays allows for inspection of different type samples.

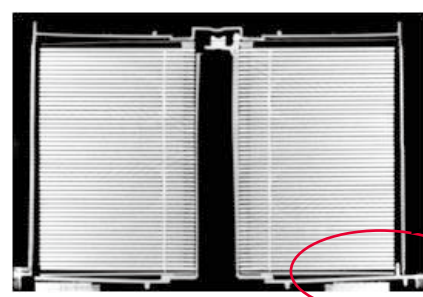


Helical Scanning (Optional)

The Helix CT system is capable to capture thin layer objects, with definitive separation of layers, while the conventional CT Process yields distorted and unclear images.



Cone beam (Feldkamp)



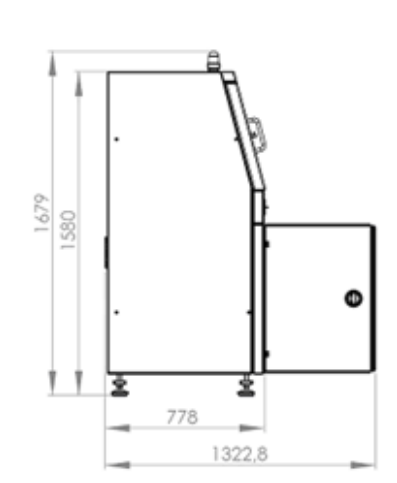
Helix CT

Dimensions

Front View



Side View

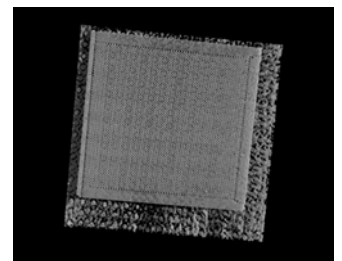
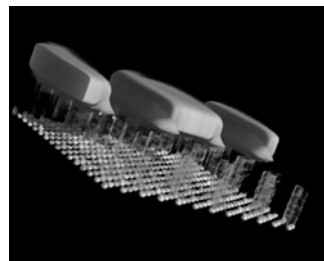


System Specifications

Model	CT-350
X-ray source output	160kV open tube
X-ray leakage	<0,2µS/h
Feature recognition	down to 0,2 µm
Voxel resolution	down to below 0,5 µm
Detector	12 bit flat panel
Max. sample size	< 50mm
Max. sample weight	< 1kg
Computer system	Windows based industrial PC-Cluster
Display	24" Flat Screen

System Requirements

Electrical power requirements	230V 50/60Hz, 16A
Temperature/ Humidity	15°C (59°F) to 30°C (86°F) / 15 to 80% RH (Non-condensing)
Machine physical dimensions (L x W x H)	approx. 1830mm x 1070mm x 1560mm
Machine weight	approx. 1.500kg



Saki Corporation

E-mail:sakicorp@sakicorp.com URL:http://www.sakicorp.com

Headquarters

Ogawa Building, 4-14-7, Nakanobu,
Shinagawa-ku, Tokyo, Japan, 142-0053
TEL:+81-3-5788-6280 FAX:+81-3-5788-6295

Saki Europe GmbH

Döllgaststr.12,
86199 Augsburg, Germany
TEL:+49-821-90-89-99-0 FAX:+49-821-90-89-99-99

